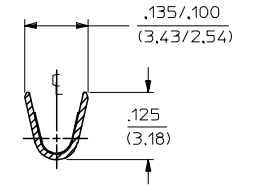
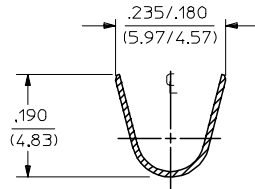
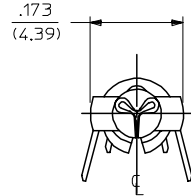


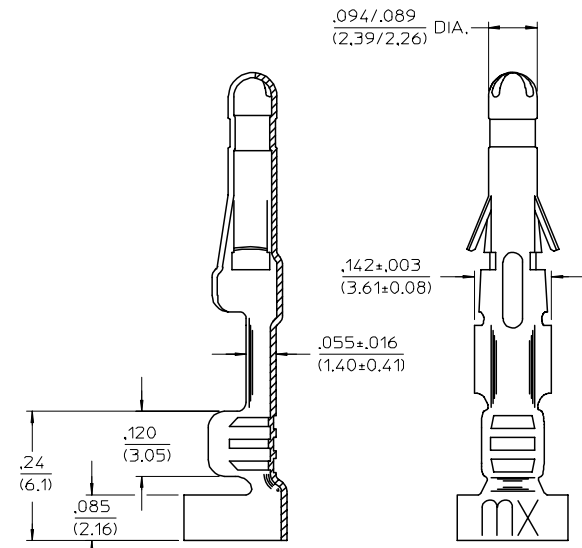
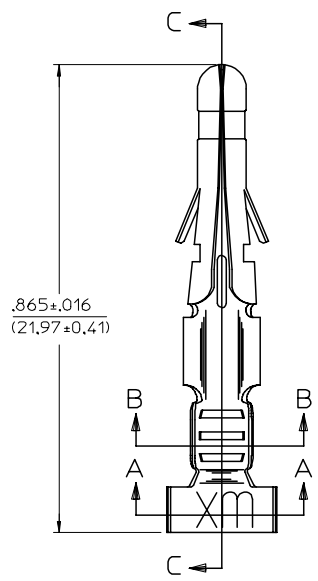
| PART NO.   | ENG. NO.     |
|------------|--------------|
| 02-09-2166 | 4549-(P909)  |
| 02-09-2167 | 4549-(P909)L |
| 02-09-3203 | 4549-(999)   |
| -          | -            |
| -          | -            |
| -          | -            |



SECTION "A-A"

SECTION "B-B"

**LEGEND**  
 4549-(\*\*\*\*)\*  
 P=PREPLATE      FINISH CODE  
 BLANK=POSTPLATE      FORM  
    BLANK=CHAIN  
    L=LOOSE



SECTION "C-C"

- NOTES:
- MATERIAL: PHOSPHOR BRONZE
  - FINISH CODES:  
 999 UNPLATED  
 909 HOT TIN DIP .000100/(0.00250) MIN.  
 \* THE PRIMARY SHIPPING CARTON WILL BE LABELED, "COMPLIANT TO RoHS 2002/95/EC AND ELV ANNEX II OF DIRECTIVE 2000/53/EC", AND CARTONS WITHOUT THIS LABEL MAY CONTAIN PRODUCT WITH TIN-LEAD.
  - PRODUCT SPECIFICATION: PS-02-09
  - PACKAGING INFORMATION: NOT AVAILABLE
  - TERMINAL FOR USE WITH .093/(2.36) SERIES HOUSINGS AND WILL ACCEPT 14 THRU 20 AWG WIRE.
  - INSERTION FORCE: 3.5 LBS. MAX. WHEN TERMINAL IS INSERTED INTO AN .093 SERIES HOUSING.
  - RETENTION: 20 LBS. MIN FROM HOUSING



| LTR. | REVISIONS  |
|------|--|
| C1   | REMOVE STOP SIGN<br>UCP2005-0278<br>RHOLTS 8/23/04 |
| C    | REVISED/REDRAWN<br>UCP2005-0194<br>RHOLTS 7/30/04  |
| B    | ADD .(999) W/EDP *<br>ECR U1 1880<br>12/28/92 RW   |
| A    | FINAL RELEASE<br>ECR U1 0857<br>6/6/12/92 RW       |

|   |                               |                                       |                    |                          |                           |  |                      |                        |
|---|-------------------------------|---------------------------------------|--------------------|--------------------------|---------------------------|--|----------------------|------------------------|
| REMOVE STOP SIGN<br>EC NO: UCP2005-0278<br>DRAWN/RHOLTS 2004/08/27<br>CHKD/FSM/TH 2004/08/27<br>APPR/FSM/TH 2004/08/31        | QUALITY SYMBOLS<br>▽=0<br>▽=0 | GENERAL TOLERANCES (UNLESS SPECIFIED) |                    | DIMENSION STYLE<br>IN/MM |                           | SCALE<br>6:1   | DESIGN UNITS<br>INCH | THIRD ANGLE PROJECTION |
|   |                               | 4 PLACES ± --- ± ---                  | GWC                | DRAWN BY<br>GWC          | DATE<br>1992/06/12        | TITLE<br>CRIMP TERMINAL, MALE,<br>.093/(2.36) DIA.<br>FOR 14-20 AWG WIRE |                      |                        |
| C1  | REV                           | 3 PLACES ± --- ± .010                 | CHECKED BY<br>RW   | DATE<br>1992/06/12       | APPROVED BY<br>GWF        | DATE<br>1992/06/12   | MATERIAL NO.         | SHEET NO.<br>1 OF 1    |
|   |                               | 2 PLACES ± 0.25 ± .014                | APPROVED BY<br>GWF | DATE<br>1992/06/12       | DOCUMENT NO.<br>SD-4549-* |  |                      |                        |
| DRAFT WHERE APPLICABLE<br>MUST REMAIN<br>WITHIN DIMENSIONS  |                               | SEE CHART                             |                    | MATERIAL NO.             |                           | DOCUMENT NO.<br>SD-4549-*  |                      | SHEET NO.<br>1 OF 1    |
| THIS DRAWING CONTAINS INFORMATION THAT IS PROPRIETARY TO MOLEX INCORPORATED AND SHOULD NOT BE USED WITHOUT WRITTEN PERMISSION |                               |                                       |                    |                          |                           |  |                      |                        |