

► General data



Power supply unit with fixed-voltage regulator, input 230 V AC, output 10 V DC/1 A

Order number	2942030
Type	CM 62-PS-230AC/10DC/1

Barcode number	4017918080587
Unit pack	1 Pcs.
Customs tariff	85044094000

► Technical data

Input data

Nominal input voltage	230 V AC
Frequency range	50 Hz ... 60 Hz
Current consumption	Approx. 330 mA
Nominal power consumption	Approx. 30 VA
Input fuse	Slow-blow

Output data

Nominal output voltage	10 V DC $\pm 4\%$
Output current	1 A
Residual ripple	40 mVss
Output fuse	fast blow
Protective circuit/component	Damping diode, varistor

General data

Width	62.5 mm
Height	139 mm
Depth	75 mm
Weight	1 kg
Operating voltage display	LED
Operating mode	100% operating factor
Test voltage input/output	4 kV AC
Degree of protection	IP 20
Ambient temperature (operation)	0 °C ... 60 °C
Installation position	On horizontal DIN rail, venting slits above and below
Assembly instructions	Can be aligned with spacing = 10 mm
Standards/regulations	IEC 664/IEC 664A/DIN VDE 0110-1:1989-01
Standards/regulations	DIN VDE 0551

Connection data, input

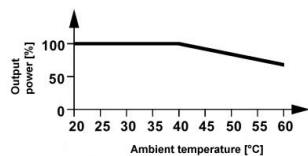
Screw thread	M 2,5
Stripping length	8 mm
Type of connection	Screw connection
Min. conductor cross section AWG/kcmil	24
Conductor cross section AWG/kcmil max	14
Min. conductor cross section, rigid	0.2 mm ²
Conductor cross section, rigid max.	2.5 mm ²
Conductor cross section flexible min.	0.2 mm ²
Max. conductor cross section, flexible	2.5 mm ²

Connection data, output

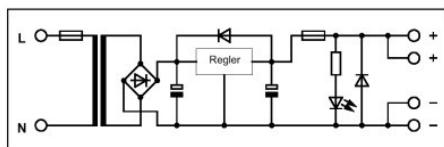
Stripping length	8 mm
Type of connection	Screw connection
Min. conductor cross section AWG/kcmil	24
Conductor cross section AWG/kcmil max	14
Min. conductor cross section, rigid	0.2 mm ²
Conductor cross section, rigid max.	2.5 mm ²
Conductor cross section flexible min.	0.2 mm ²
Max. conductor cross section, flexible	2.5 mm ²

▸ Drawings

Diagram



Circuit diagram



► Accessories

Item	Designation	Description
Marking		
2947035	EMG-GKS 12	Equipment marker, width 12 mm
2947585	EMG-SGKS 10	Equipment marker, narrow

► Address

Phoenix Contact GmbH & Co. KG
Flachsmarktstr. 8
32825 Blomberg
Germany
Tel + 49 - (0) 52 35 - 3-00
Fax + 49 - (0) 52 35 - 3-4 12 00
www.phoenixcontact.com

© Phoenix Contact
Technical modifications reserved