

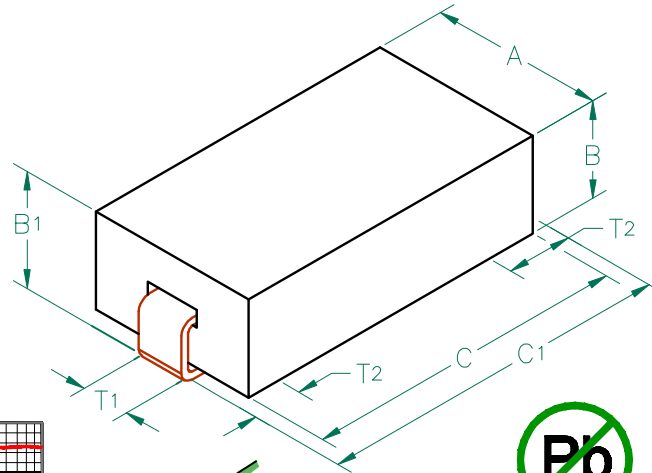
28F0181-1SR-10

PHYSICAL DIMENSIONS:

A	4.57 [.180]	± 0.08 [.003]
B	2.54 [.100]	± 0.08 [.003]
B ₁	3.05 [.120]	± MAX
C	8.51 [.335]	± 0.23 [.009]
C ₁	9.53 [.375]	± MAX

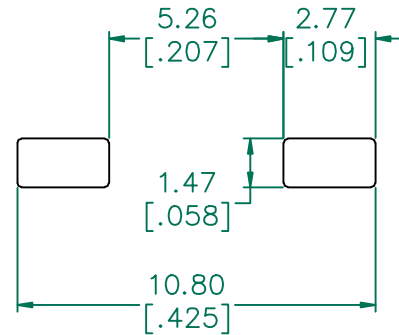
WIRE DIMENSIONS:

T ₁	1.27 [.050]	± REF.
T ₂	1.52 [.060]	± 0.51 [.020]



RoHS
2002/95/EC

LAND PATTERNS FOR REFLOW SOLDERING



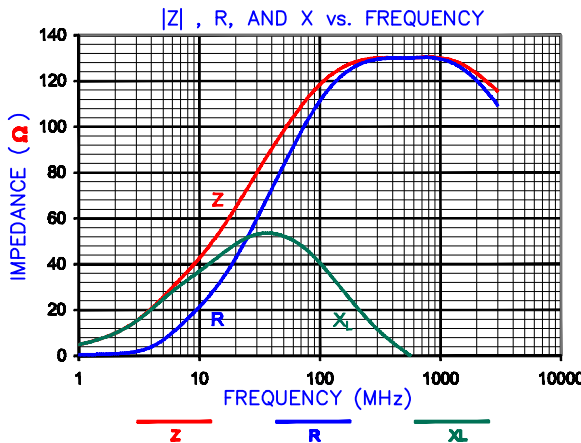
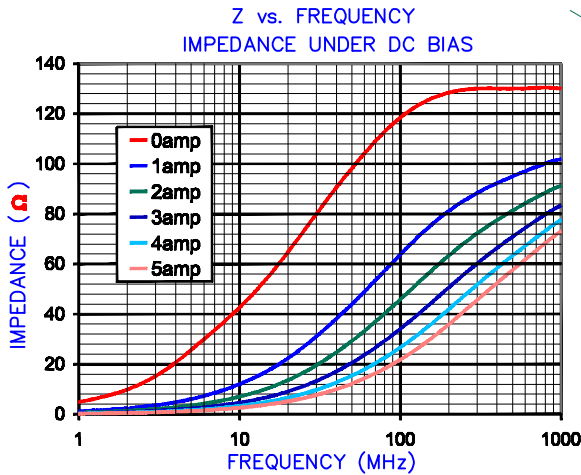
(For wave soldering, add 0.762 [.030] to this dimension.)

ELECTRICAL CHARACTERISTICS:

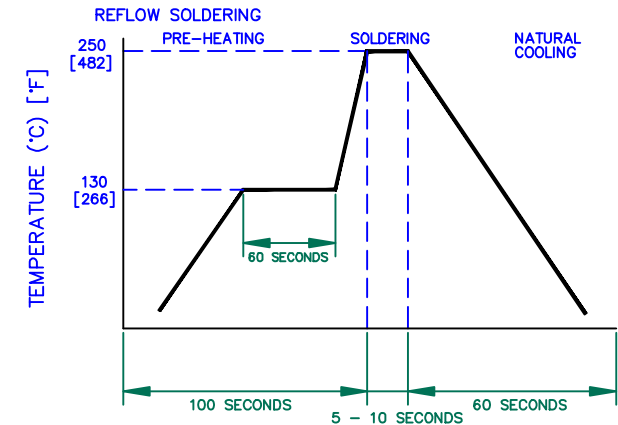
	Z (Ω) @		DCR (Ω)	Rated Current
	25MHz	100MHz		
Nominal	67	115		
Minimum	—	87		
Maximum	—	144	.001	10,000 mA

NOTES: UNLESS OTHERWISE SPECIFIED

1. TAPED AND REELED per CURRENT EIA SPECS. 13" REELS, 2,500 pcs/REEL.
2. COMPONENTS SHOULD BE ADEQUATELY PREHEATED BEFORE SOLDERING.
3. REF. CARRIER TAPE SPECIFICATION # CART181-13.
4. TERMINATION FINISH IS 100% TIN.

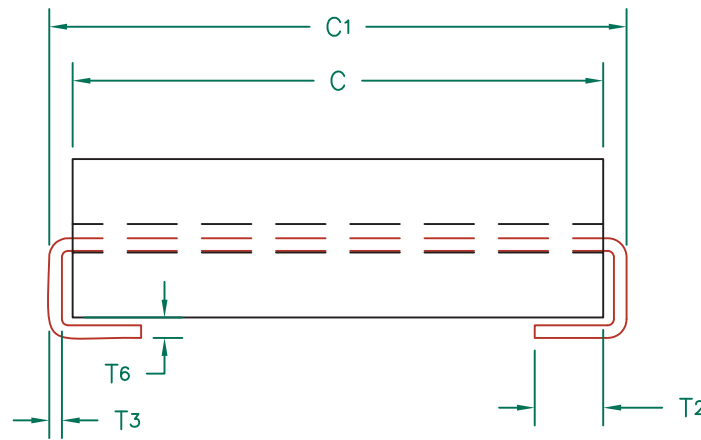
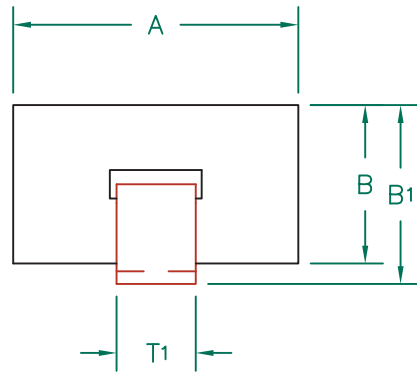


RECOMMENDED SOLDERING CONDITIONS



UNCONTROLLED DOCUMENT

DIMENSIONS ARE IN mm [INCHES].				This print is the property of Laird Tech. and is loaned in confidence subject to return upon request and with the understanding that no copies shall be made without the written consent of Laird Tech. All rights to design or invention are reserved.				
E	UPDATE LAND PATTERN ADD ROHS	02/26/09	JRK	PROJECT/PART NUMBER: 28F0181-1SR-10		REV E	PART TYPE: ASSEMBLY	DRAWN BY: JRK
D	UPDATE COMPANY LOGO	10/24/08	JRK	DATE: 04/22/04		SCALE: NTS	SHEET: 2 of 3	
C	UPDATE COMPANY LOGO	04/19/07	JRK	GAD # 28F0181-1SR-10-2-E		TOOL # H0181		
B	CORRECT CURRENT RATING	01/12/06	JRK					
A	ORIGINAL DRAFT	04/22/04	JRK					
REV	DESCRIPTION	DATE	INT					

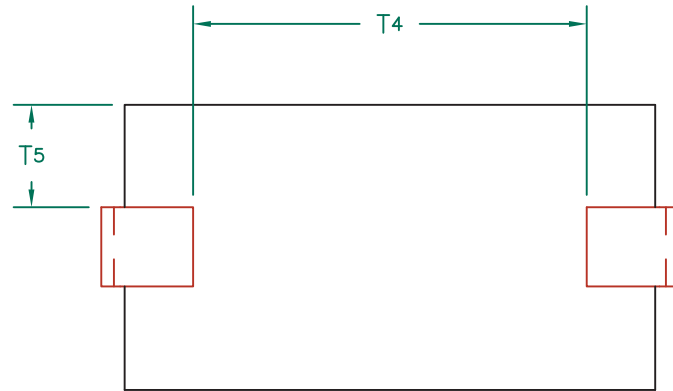
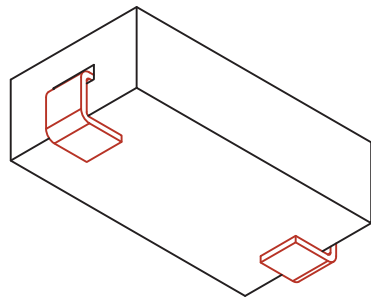


SCALE DRAWING 1:1

28F0181-1SR-10

ELECTRICAL TESTING

TEST:	Z	Z
# TURNS	1	1
AWG	-	-
FREQUENCY	25 MHz	100 MHz
NOMINAL	67 Ω	115 Ω
MINIMUM	- Ω	87 Ω
MAXIMUM	- Ω	144 Ω
WEIGHT/1000	.046 kgs.	1.02 lbs.



DIMENSIONS:

A	4.57 [.180]	+	0.08 [.003]
B	2.54 [.100]	+	0.08 [.003]
B ₁	3.05 [.120]	+	MAX
C	8.51 [.335]	+	0.23 [.009]
C ₁	9.53 [.375]	+	MAX



UNCONTROLLED DOCUMENT

NOTES: UNLESS OTHERWISE SPECIFIED

1. WIRE: FLAT, OXYGEN FREE COPPER 1.27 X 0.20 [.050 X .008] PLATED 100% TIN OVER NICKEL. TIN THICKNESS: 0.005 [.0002], NICKEL THICKNESS: 0.0002 [.00008].
2. IMPEDANCE VALUES ARE GROSS, MEASURED USING W0121 WIRE w/ NO D.C. BIAS.
3. REFERENCE STEWARD WIRE PURCHASE SPEC. W0121-*
4. *ON = PARYLENE COATED (.00025" TH).
5. REFERENCE STEWARD CORE P/N 28H0181-100.
6. T6 MEASURED ON COMPARATOR WITH TERMINALS UP.
7. TERMINATION FINISH IS 100% TIN.

WIRE DIMENSIONS:

T ₁	1.27 [.050]	+	REF.
T ₂	1.52 [.060]	+	0.51 [.020]
T ₃	0.20 [.008]	+	REF.
T ₄	5.97 [.235]	+	TYP.
T ₅	1.65 [.065]	+	0.25 [.010]
T ₆	0.43 [.017]	+	MAX

DIMENSIONS ARE IN mm [INCHES].			
F	CHANGE REFLOW TEMPERATURE	02/10/11	JUN
E	UPDATE LAND PATTERN ADD ROHS	02/26/09	JRK
D	UPDATE COMPANY LOGO	10/24/08	JRK
C	UPDATE COMPANY LOGO	04/19/07	JRK
B	CORRECT CURRENT RATING	01/12/06	JRK
A	ORIGINAL DRAFT	04/22/04	JRK
REV	DESCRIPTION	DATE	INT

This print is the property of Laird Tech. and is loaned in confidence subject to return upon request and with the understanding that no copies shall be made without the written consent of Laird Tech. All rights to design or invention are reserved.



PROJECT/PART NUMBER: 28F0181-1SR-10		REV F	PART TYPE: ASSEMBLY	DRAWN BY: JRK
DATE: 04/22/04	SCALE: 8:1	SHEET: 3 of 3		
CAD # 28H0181-1SR-10-3-F	TOOL # H0181			